

Online Exhibition 3

Tradition, Art and Continuity

Highlights from National Museum, New Delhi

The Indian subcontinent is blessed with a varied flora and fauna which is home to a diverse group of communities who have distinct cultures and habits. The collections in this virtual display represent exquisite examples of people's art, aesthetic sensibilities, socio-religious and economic aspects hinting cross-influences between communities and different sections of society.



INDRAJIT (*Chhau mask*)

**West Bengal
20th century
Papiermache; painted
Lt. 49 cm (approx.)
Acc.no. 72.40**



KATHPUTLI(Stringed puppets)

Rajasthan

20th century

Wood, cloth; carved, painted

Lt. 58 and 44 cm resp.(with skirt)

Acc.no. 64.415, 61.1102

JUTI

Gwalior, Madhya Pradesh

20th century

Leather; stitched

Lt. 29 cm

Acc.no. 59.220/1 a,b





Perak Head-dress

Ladakh
20th century
Leather, semi-precious stones, beads
Lt. 60 cm
Acc.no. 90.825



DURGA SARA, LAKSHMI SARA AND RADHA-KRISHNA SARA

West Bengal

20th century

Terracotta; painted

Dia. 32 cm (of the biggest plate)

Acc.nos. 73.269, 72.463 AND 64.1798

ELEPHANT SHAPED BASKET

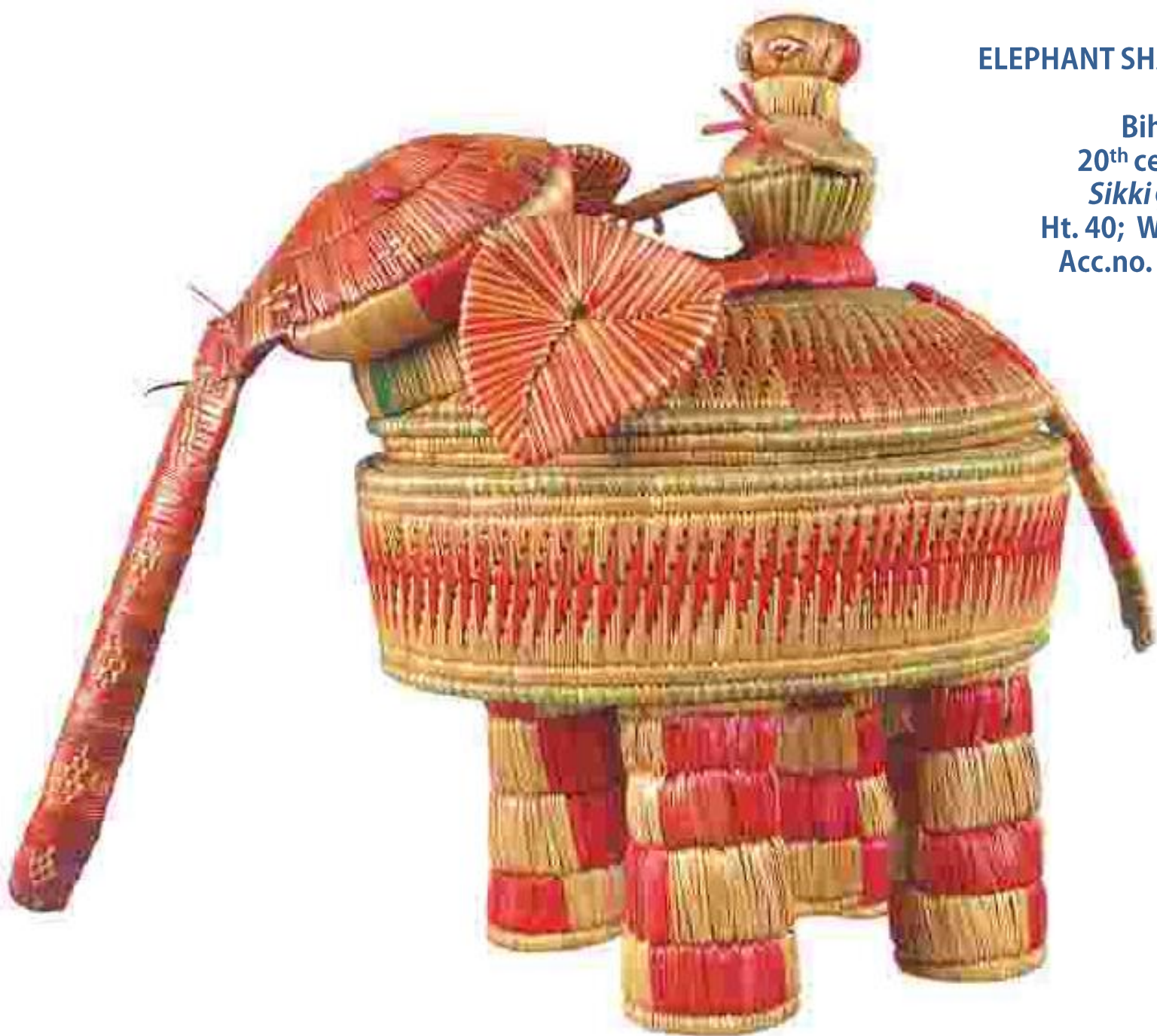
Bihar

20th century

Sikki grass

Ht. 40; Wd. 22 cm

Acc.no. 71.673



MANDILIPEDI/ LAKHOPEDI

Nawarangpur, Odisha

20th century

Bamboo and lacquer

Lt. 23 (with lid) ; Ht. 12.5 cm (of the biggest)

Acc.no. 70.180 a, b and 63.2354





CAMEL RIDERS

Rajasthan
20th century
Wood; carved, painted
Ht. 41 cm
Acc.no. 71.259

SCULPTURE SHOWING AN ENSHRINED GODDESS AND DEVOTEES ENGAGED IN RITUALS DEDICATED TO HER.



**Madhya Pradesh
20th century
Bronze; casted
Ht. 41; Lt. 23; Wd. 22 cm
Acc.no. 96.101**



MALE FIGURE HOLDING *TURHI* AND DRUM

Bastar, Madhya Pradesh

20th century

Bronze; casted

Ht. 100 cm

Acc.no. 96.4

Visiting Information

National Museum

Janpath

New Delhi-110011

Open 10:00 am to 5:00 pm (Tuesday to Sunday; Monday closed)

Phone: 91-11-23019272

www.nationalmuseumindia.gov.in

Facebook: www.facebook.com/Nationalmuseumnewdelhi

Twitter: twitter.com/NMnewdelhi