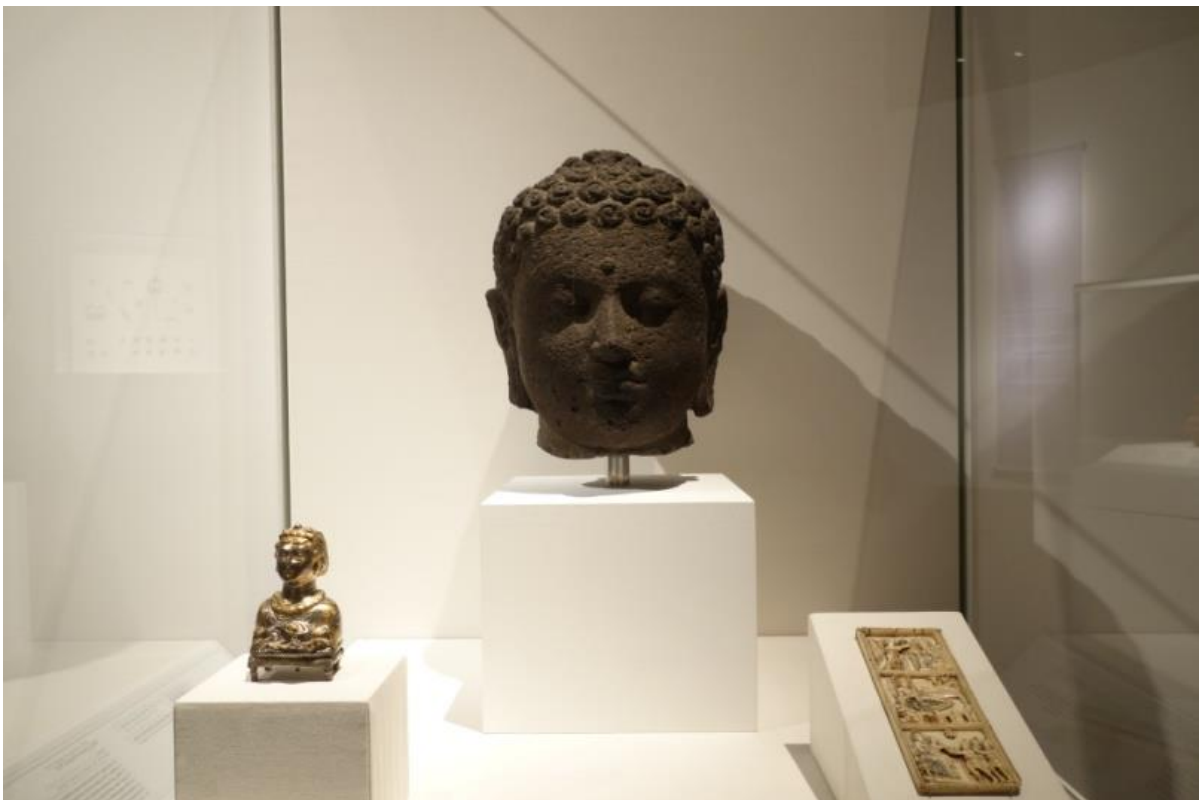


REFERENCES FOR CLOTH COVERINGS FOR DISPLAY CASES





The Sultan Qabus

Shen and Sabana are about 1,200 years apart, but they were made with care and skill because they are considered by the Sultan Qabus. These fragments show the same technique of the same material that was used. The fragments are the same as the ones that were found in the same place. The fragments are the same as the ones that were found in the same place. The fragments are the same as the ones that were found in the same place.

السلطان قابوس

شبنم و سبانه هما قديمتان قريبتان، لكنهما تم صنعهما بعناية و مهارة لأنهما تعتبران من قبل السلطان قابوس. هذه الأجزاء تظهر نفس التقنية ونفس المادة التي تم استخدامها. الأجزاء هي نفسها التي تم العثور عليها في نفس المكان. الأجزاء هي نفسها التي تم العثور عليها في نفس المكان.